



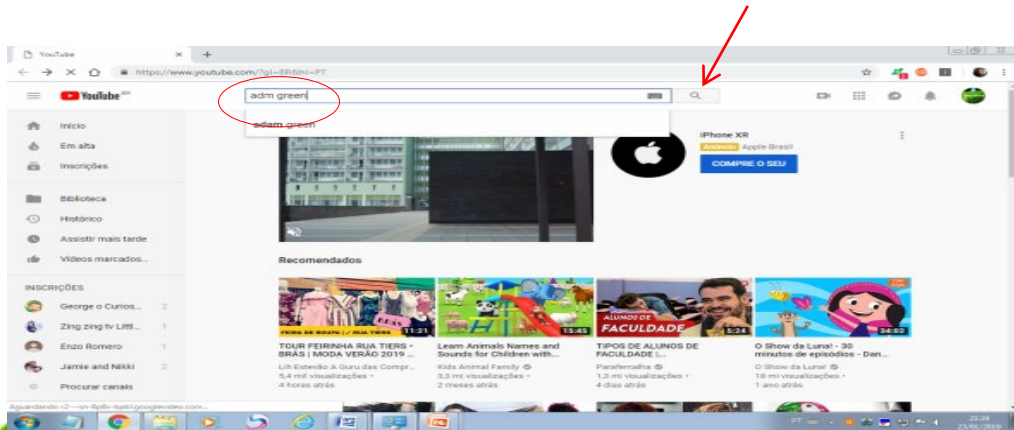
Mestrado Profissional em
Ensino em Ciências da Saúde
e do Meio ambiente

ADM GREEN

The Green Channel of the Young
Administrator

How to access the Channel?

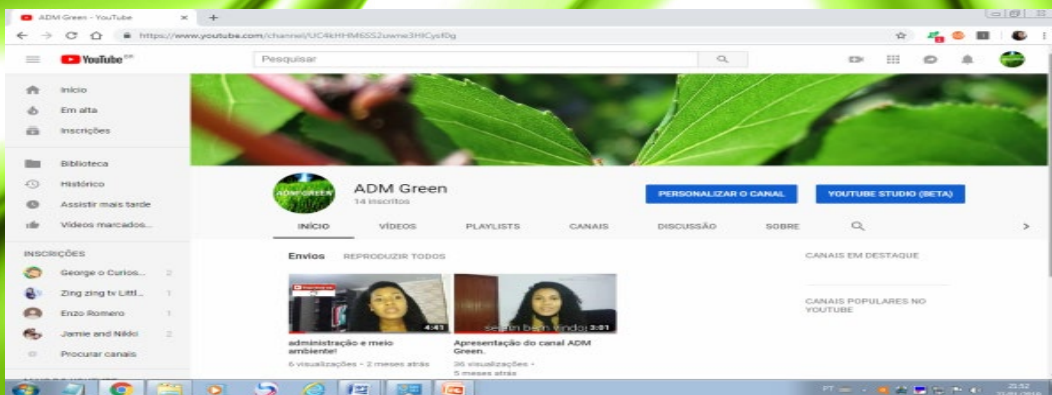
Step 1: Enter the youtube website (www.youtube.com) and in the search field type adm green and click search



Step 2: Next the options will appear, click on the ADM green channel.



Step 3: It will open the channel and now just choose the videos you want to watch, you can leave your opinion, questions and suggestions.



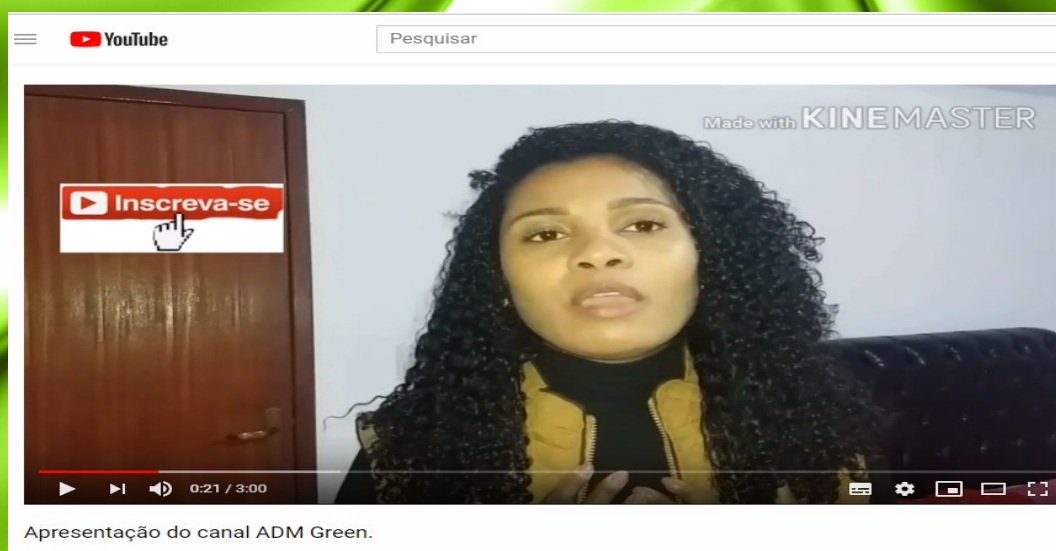
Channel Creation Motivation

In the face of technological advances, today's generation has become increasingly digital, and each day young people have spent more time using the internet. The YOUTUBE™ channel has been chosen as a tool to reach young people of this generation because of its breadth and ease of access anywhere and anytime. The first video was elaborated explaining the purpose of the channel, personal presentation, target audience and the importance of environmental management for administrators.

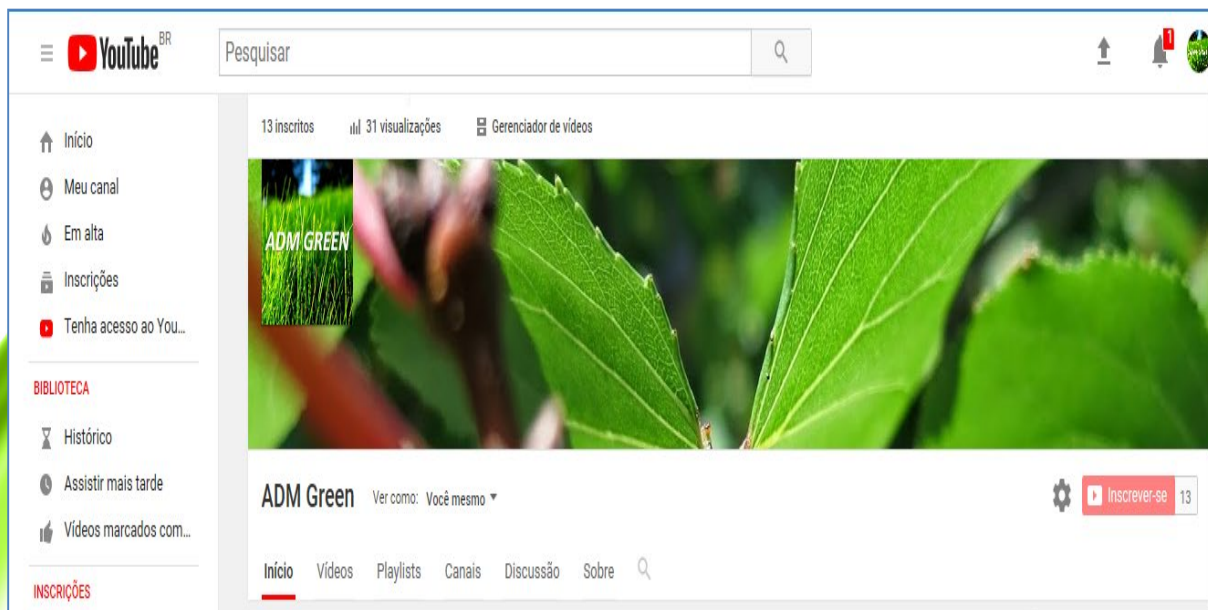
Canal Construction

The Channel has five tabs: Home, Videos, Playlists, Channels and about:

- Start - contains the channel name, channel image and uploaded videos.
- Videos - contains the uploaded videos.
- Playlists - where you can create themed or favorite lists.
- Channels - where channel listings for the same theme may be suggested.
- About - contains information about the channel, such as description of the purpose of the channel, date of channel subscription, number of views and subscribers.



Thank God for everything. To all the people who were by my side and supported during this journey. To Prof. Dr. Ronaldo Figueiró for all his patience, companionship and dedication in the construction of this dissertation.



"Happy is he who transfers what he knows and learns what he teaches."

Cora Coralina

**Author: Josiane da Silva Cassange
Advisors: Teacher Doctor Ronaldo Figueiró
Teacher Doctor Milena Nascimento**